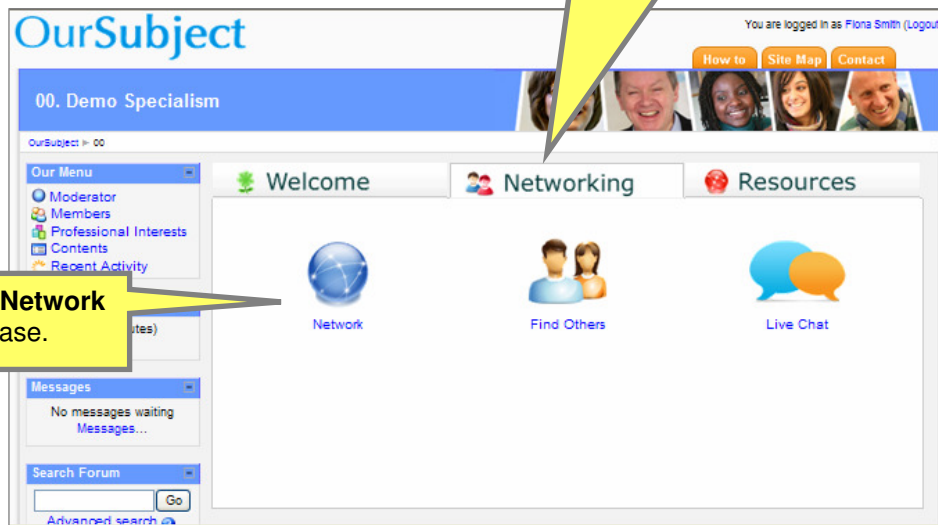


ASSOCIate Online

Achieving Subject Specialist Online Communities
and providing subject support wherever you are

How to... Upload into the Network database

1. The **Network** database is located in the **Networking** tab.



2. Click on the icon **Network** to access the database.

Network

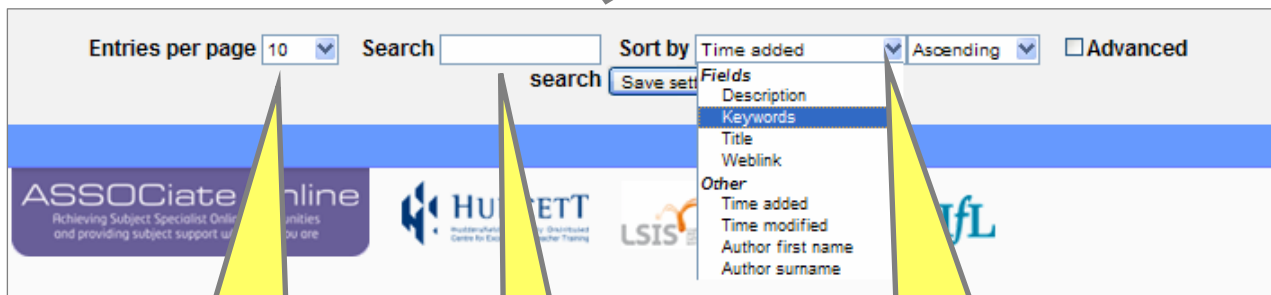
A database of practitioner and professional networks for members to browse and add to, providing opportunities for networking with others in the specialist field.

[View list](#) [View single](#) [Search](#) [Add entry](#)

Network	Comments
Teacher Net It has online publications and magazines. Also has some guidance on CPD. http://www.teachernet.gov.uk	more details 1 comment(s)
Association of Teachers Has a good collection of links by subject and key stages. http://www.byteachers.org.uk	more details 0 comment(s)
Teachers TV Teachers TV has news, updates, videos, resources and forums for teachers in all sectors. http://www.teachers.tv/	more details 1 comment(s)

3. The database appears as a list. The contributor provides appropriate data. You can comment on the networks provided by others.

4. At the bottom of the screen, there are some options.

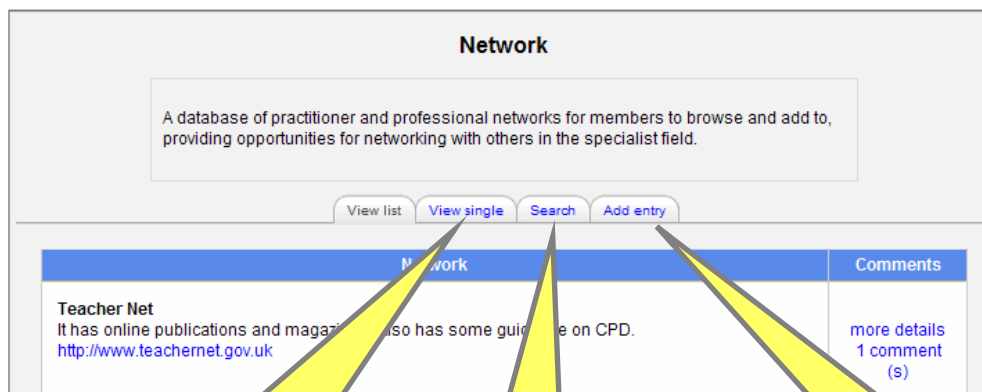


5. You can choose how many entries you wish to view on one page by using the drop-down box.

6. You can search using keywords.

7. You can sort the database by time, author etc.

8. At the top of the page, you will see further options.



9. The system will automatically show you the complete list.

You can view a single item by clicking the **View single** tab.

10. You can search the database using the **Search** tab.

11. You can add an entry by clicking the **Add entry** tab.

12. Clicking on **View single** will show details of a particular network.

Network

View list View single Search Add entry

Page: 1 2 3 (Next)

Added by :	ASSOC Member (Tuesday, 11 August 2009, 01:00 PM)
Title and Description :	Teacher Net It has online publications and magazines. Also has some guidance on CPD.
Keywords :	publication, CPD, forum
Weblink :	http://www.teachernet.gov.uk

by ASSOC Moderator - Monday, 24 August 2009, 11:21 AM

This site is useful for all teachers and the section on 14-19 is particularly good for those who are teaching this age range in FE.

Add comment

Page: 1 2 3 (Next)

13. **Added by** shows the contributor details – clicking on the name will take you to that person's profile.

14. **Title and Description** details provided by the contributor.

15. **Keywords** provided by the contributor – used in the **Search** tool.

16. **Weblink** is the URL for the network – clicking on this will take you directly to the web site.

17. If there are any member comments on the network, you will be able to read them all here.

18. To add an entry click on **Add entry**. You will be taken to a 'form' for you to complete with appropriate details.

19. Type in the name of the network in the **title** field.

20. Provide a short **description** of the network.

21. Enter appropriate **keywords** so that others will be able search for your entry more effectively.

Network

View list View single Search Edit entry

Title: Innovative Teachers

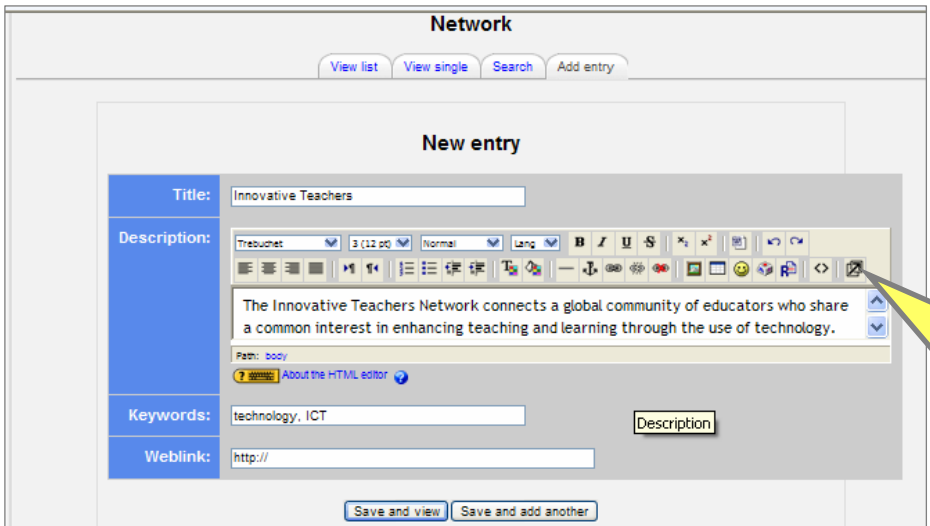
Description: Trebuchet 1 (3 pt) Lang B I U S X x² The Innovative Teachers Network connects a global community of educators who share a common interest in enhancing teaching and learning through the use of technology. Provides free access to resources, online communities and more.

Path: About the HTML editor

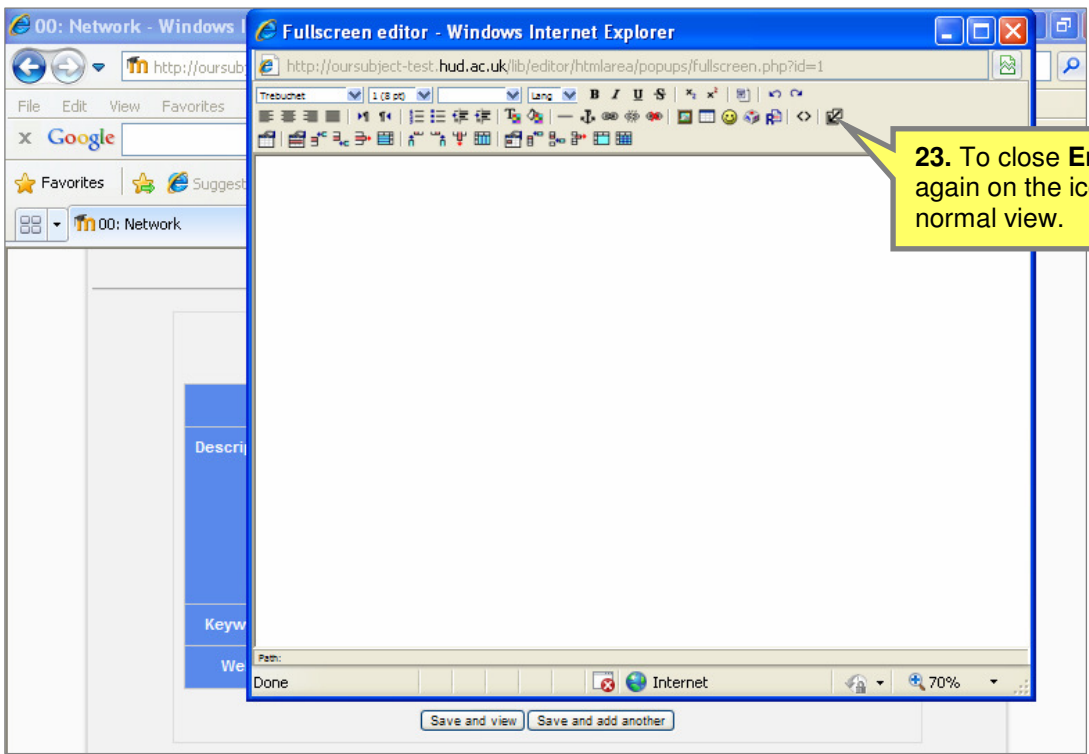
Keywords: technology, ICT

Weblink: http://

Save and view Cancel



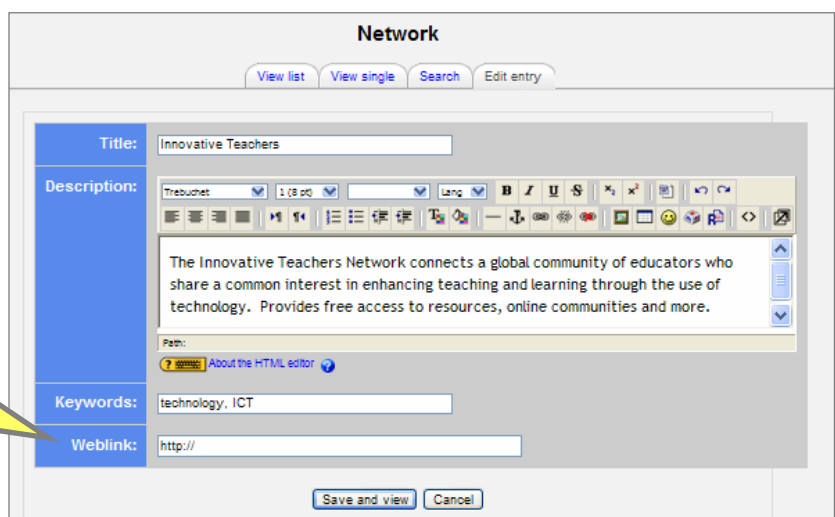
22. Tip: The **Enlarge Editor** tool can be used if you find the text boxes too small and wish to have a larger view of the text you are entering. Next screen shows the larger space to type.

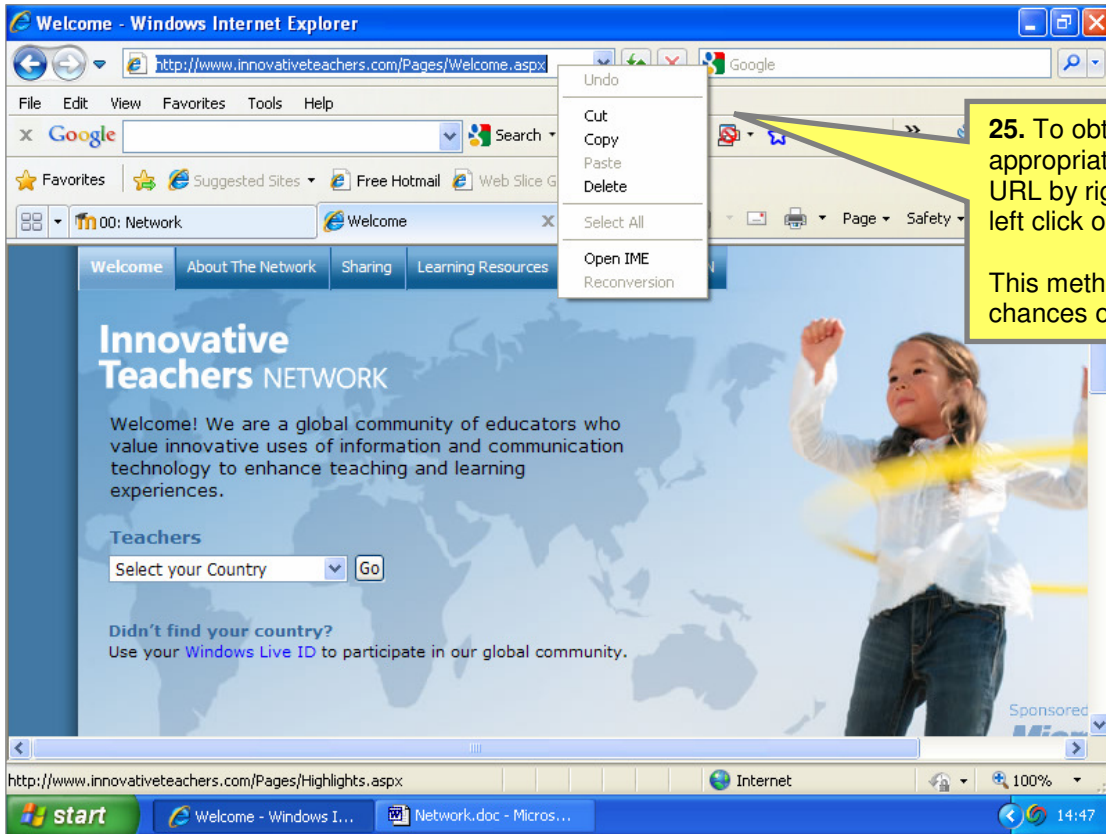


23. To close **Enlarge Editor**, click again on the icon and you will return to normal view.

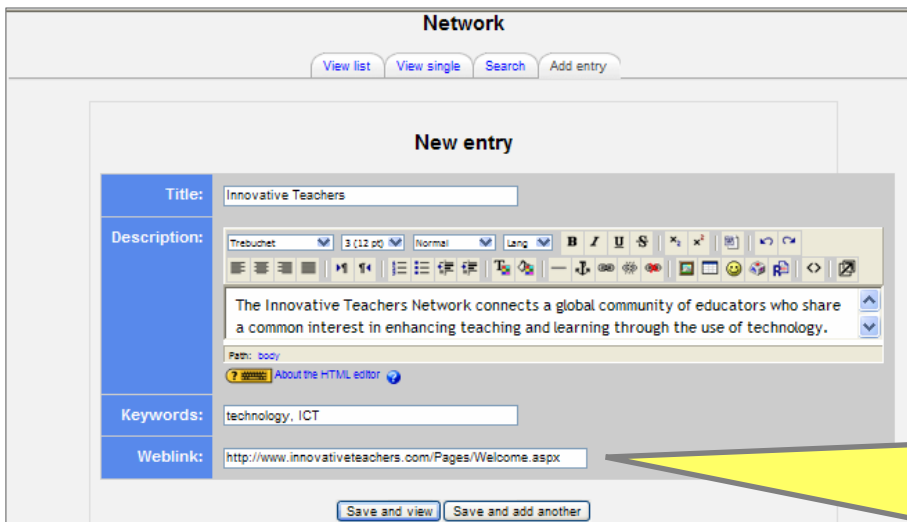
24. To obtain the URL, you need the web address of the network.

Tip: You can either type in the URL yourself or, to avoid any inputting mistakes, copy and paste that URL from the address bar of a browser.



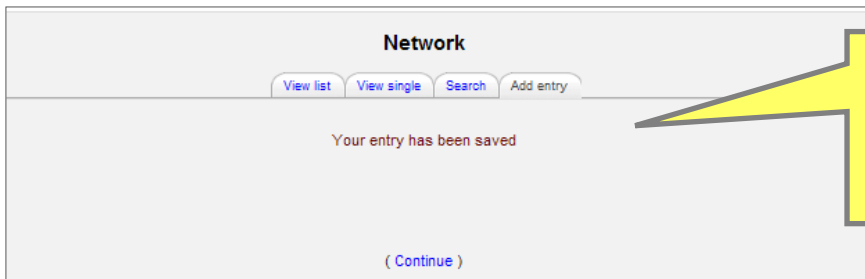


25. To obtain the URL, open the appropriate web site, highlight the URL by right clicking on it and then left click on copy.
This method minimises the chances of any inputting mistakes.



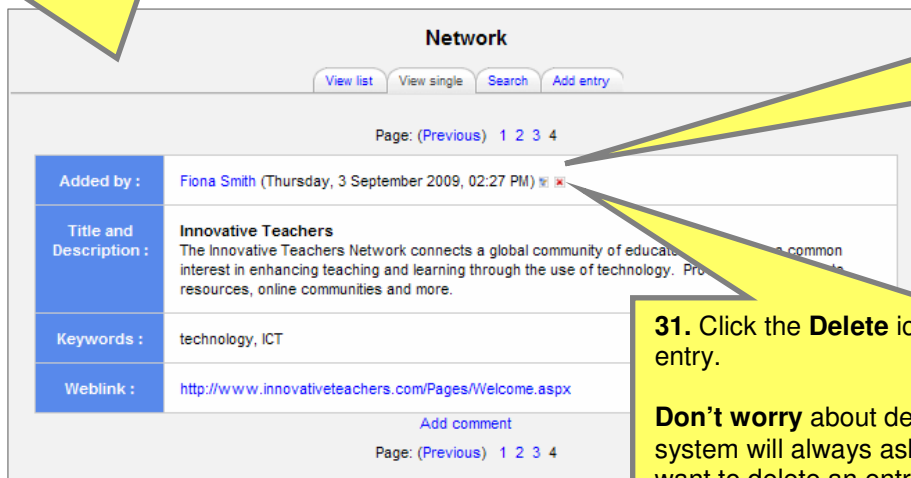
26. Paste the URL into the space provided.
Note: http:// is provided as a default in the web link box – make sure that there is only one http:// in the address when you have pasted the URL.
Check the link carefully.

27. When you are happy with what you have uploaded, click **Save and view**.
If you wish to add further networks, click **Save and add another**.



28. This message will appear.
 You can either click **Continue** or wait a few seconds – the following screen will automatically appear:

29. Your contribution will appear like this.



30. Click the **Edit** icon if you need to edit your entry. This will take you back to the 'form' and you can make any necessary changes.

31. Click the **Delete** icon if you want to delete your entry.
Don't worry about deleting anything by accident – the system will always ask if you are sure whether you want to delete an entry.
 You can only edit or delete your own entries. Only the moderator can edit and delete the postings of others.

Network		Comments
Teacher Net It has online publications and magazines. Also has some guidance on CPD. http://www.teachernet.gov.uk	more details 1 comment(s)	
Association of Teachers Has a good collection of links by subject and key stages. http://www.byteachers.org.uk	more details 0 comment(s)	
Teachers TV Teachers TV has news, updates, videos, resources and forums for teachers in all sectors. http://www.teachers.tv/	more details 1 comment(s)	
Innovative Teachers The Innovative Teachers Network connects a global community of educators who share a common interest in enhancing teaching and learning through the use of technology. Provides free access to resources, online communities and more. http://www.innovativeteachers.com/Pages/Welcome.aspx	more details 0 comment(s) 	

32. When you return to the list, you will see your contribution.

age range in FE.

Comment ^

Trebuchet 3 (12 pt) Normal Lang B I U S

I teach a lot of 14-16 provision and I did find some useful tips on this site.

Path: body

Format HTML format

There are required fields in this form marked ^.

Page: 1 2 3 4 (Next)

37. When you are happy with your entry, scroll down the page and click **Save changes**.

Added by :	ASSOC Member (Tuesday, 11 August 2009, 01:00 PM)
Title and Description :	Teacher Net It has online publications and magazines. Also has some guidance on CPD.
Keywords :	publication, CPD, forum
Weblink :	http://www.teachernet.gov.uk

by ASSOC Moderator - Monday, 24 August 2009, 11:21 AM

This site is useful for all teachers and the section on 14-19 is particularly good for those who are teaching this age range in FE.

by Fiona Smith - Thursday, 3 September 2009, 03:13 PM

I teach a lot of 14-16 provision and I did find some useful tips on this site.

[Add comment](#)

Page: 1 2 3 4 (Next)

38. Your comment will appear like this.

Practitioners and the Network database

If you are a:	Utilisation of the Network database
Teacher Educator	1. Demonstrate tutor activity: upload details of a network in your own specialist database. Display this to your trainees to encourage them to utilise their own specialist network databases. 2. Encourage trainees to use their engagement with ASSOCiate Online to evidence achievement of ITE assessment criteria: For further details, see <i>OurSubject and LLUK Units of Assessment: Information and Guidance for Teacher Educators and Initial Teacher Education Trainees</i> . 3 See Case Study below.
Practitioner applying for A/QTLS (Professional Formation)	Evidence of engagement with other subject specialists through specialist networks could be utilised as evidence for Personalised Element 1 – Subject Currency. Evidence of membership of and contribution to ASSOCiate Online demonstrates engagement with a wider community of practice, which could be used as evidence for Personalised Element 5 – Reflective Practice.
Practitioner collating CPD activity records	Evidence of engagement with a wider community of practice through networks could be used as evidence of CPD. The IfL’s requirements must be remembered; that is, the practitioner must be able to provide evidence of: <ol style="list-style-type: none"> 1. critical reflection on activity; 2. impact on practice; 3. impact on learners’ achievement and success.
ITE trainee	Engagement with Networks of specialists can be utilised as evidence of achievement of many ITE assessment criteria, e.g. engaging with a wider community of practice, updating subject specialist knowledge, utilising new and emerging technologies. For further details, see <i>OurSubject and LLUK Units of Assessment: Information and Guidance for Teacher Educators and Initial Teacher Education Trainees</i> .

Case Study – ASSOCiate Online and ITE

Margaret is a teacher educator in a small FE college and follows a National Awarding Body ITE specification. The number of trainees in the ITE group is modest and none of the trainees shares a subject specialism.

All ITE curricula require trainees to demonstrate engagement with other subject specialists. This is often evidenced in the file that a trainee creates to demonstrate their professional practice and personal development, e.g. a Personal Development Plan, ILP, Personal and Professional Practice File.

Margaret decided to use the network database in conjunction with peer review. She asked each trainee to research a network from the database and record their findings in the appropriate section of their Personal and Professional Practice file. She asked each trainee to bring their file to a session and exchange it with a peer. When the trainees had read each other’s documents, they were asked to discuss their use of the network database and how/whether they had differed in their responses to the opportunities the networks provide. The trainees then reflected on this discussion and recorded suggestions and ideas that evolved from it. Follow-up work was set which involved each trainee joining the network of their choice and continuing to record the development opportunities offered. Through this exercise, the trainees had evidenced achievement of some of the assessment criteria of their ITE course.

For further details, see *OurSubject and LLUK Units of Assessment: Information and Guidance for Teacher Educators and Initial Teacher Education Trainees*.